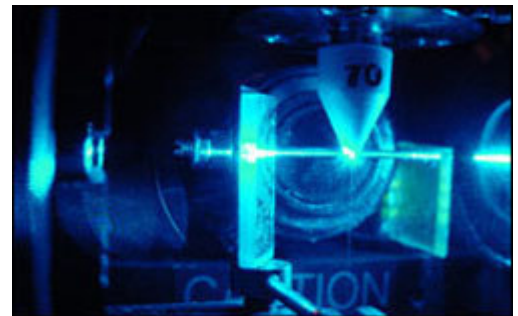
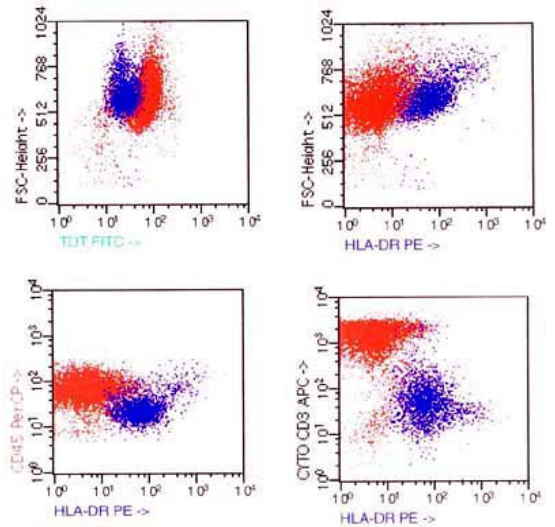


## Flow cytometry and Gastroenterology

- Ideally perform endoscopy in morning
- Submit fresh (in 5mls saline)
- Advise courier (urgent)
- Specimen needs to be delivered within 2 hours

Flow cytometry is a technique to analyze suspended individual cells. In an instrument called a flow cytometer, cells flow through one or more lasers, scattering light and perhaps emitting fluorescence. Light scatter provides some information regarding the morphology of the particles – large or small, granular or smooth, for example. Fluorescence may be emitted by the cells naturally; however most assays will require the use of at least several fluorescent dyes to label different cellular molecules or structures, such as membrane antigens, DNA, intracellular enzymes, ions, or organelles.

Flow cytometry is used to identify abnormal cell populations in human body tissue. Tissue obtained by endoscopic biopsy must be submitted fresh for examination and the specimen should ideally be processed within two (2) hours of collection.



1. Please advise Histopath (phone 9764 4300) on **THE DAY BEFORE** to allow the urgent courier to be available when the specimen is taken. Advise of likely biopsy time. Biopsies taken in the **MORNING** will allow the specimen to be prepared on the same day.
2. Ideally at least 5-8 biopsies should be taken for flow cytometry, and placed fresh in a sterile container containing **5mls of saline**. Do not wrap specimen in any gauze nor should the specimen be refrigerated. On the request form advise that a **lymphoproliferative disorder** is being sought (to allow optimal instrument settings).
3. A separate set of biopsies for histology can be placed in formalin.