

Patient Information Report

This report includes a photograph taken using a microscope. The image is of a lesion that has been removed and some general information about the diagnosis is included.

What is squamous cell carcinoma ?

Squamous cell carcinoma is a tumour of the cells which make up the epidermis, or skin surface. These cells can penetrate into the underlying tissue, a process referred to as invasion. Squamous cell carcinomas usually occur as a result of sun damage over a long period of time.

Is it common ?

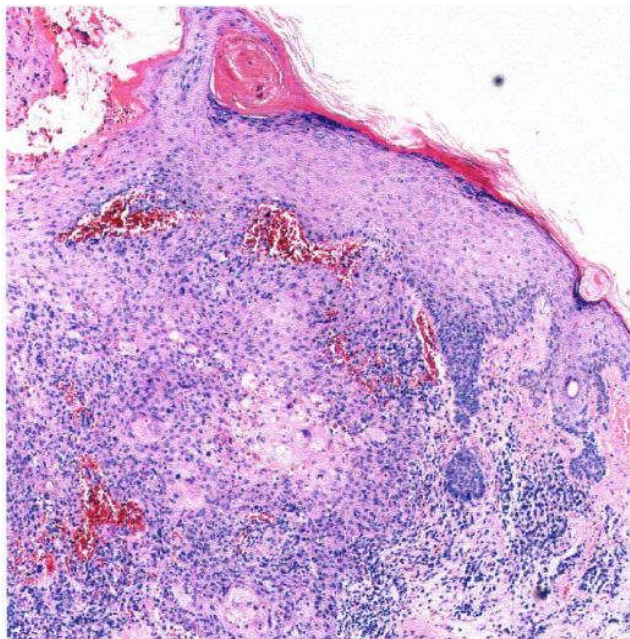
Squamous cell carcinoma is the second most common type of skin cancer in Australia. It occurs in about 1.7% of the Australian population. It tends to arise in the sun-damaged skin of fair-skinned people who tan poorly.

Treatment ?

The treatment depends on where the cancer is located and its size. There are several different types of squamous cell carcinoma and the treatment may vary according to the type you have.

What now ?

It is important to protect your skin from the sun in order to prevent further damage. Keep a close watch for other lesions by regularly examining your skin. Always have persisting or changing sores or lumps checked by your doctor.



Squamous cell carcinoma